

Human BCMA/TNFRSF17 Protein

Cat. No. BCM-HM117

Description

Source	Recombinant Human BCMA/TNFRSF17 Protein is expressed from HEK293 with His tag and Avi tag at the C-Terminus. It contains Met1-Ala54.
Accession	Q02223-1
Molecular Weight	The protein has a predicted MW of 8.9 kDa. Due to glycosylation, the protein migrates to 12 kDa and 15-17 kDa based on Bis-Tris PAGE result.
Endotoxin	Less than 1 EU per μg by the LAL method.
Purity	>95% as determined by Bis-Tris PAGE >95% as determined by HPLC

Formulation and Storage

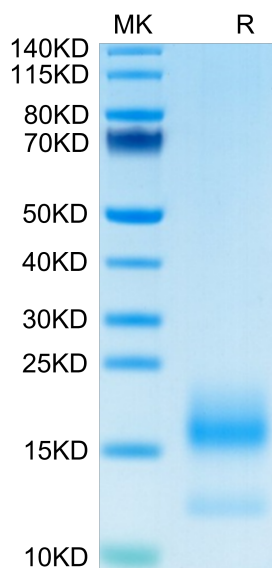
Formulation	Lyophilized from 0.22 μm filtered solution in PBS (pH 7.4). Normally 8% trehalose is added as protectant before lyophilization.
Reconstitution	Centrifuge the tube before opening. Reconstituting to a concentration more than 100 $\mu\text{g}/\text{ml}$ is recommended. Dissolve the lyophilized protein in distilled water.
Storage	-20 to -80°C for 12 months as supplied from date of receipt. -80°C for 3 months after reconstitution. Recommend to aliquot the protein into smaller quantities for optimal storage. Please minimize freeze-thaw cycles.

Background

B-cell maturation antigen (BCMA or BCM), also known as tumor necrosis factor receptor superfamily member 17 (TNFRSF17), is a protein that in humans is encoded by the TNFRSF17 gene. TNFRSF17 is a cell surface receptor of the TNF receptor superfamily which recognizes B-cell activating factor (BAFF).

Assay Data

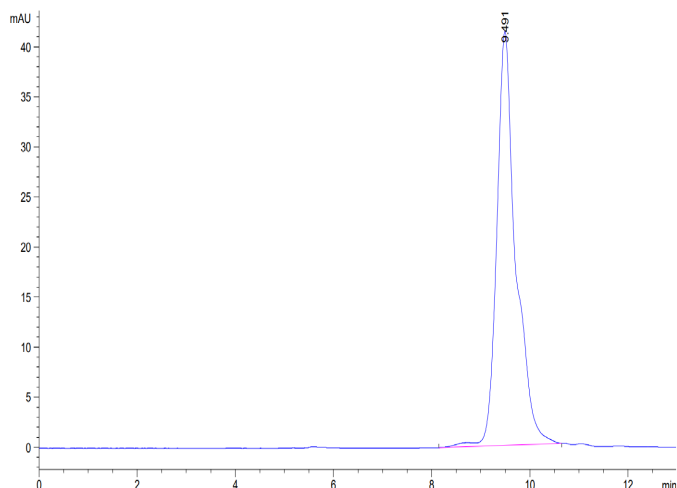
Bis-Tris PAGE



Human BCMA on Bis-Tris PAGE under reduced condition. The purity is greater than 95%.

SEC-HPLC

Assay Data

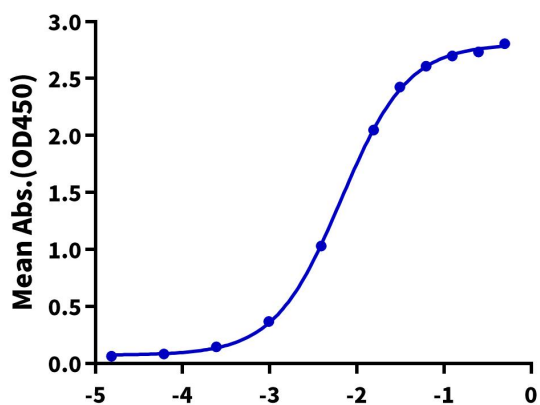


The purity of Human BCMA is greater than 95% as determined by SEC-HPLC.

ELISA Data

Human BCMA, His Tag ELISA

0.1µg Human BCMA, His Tag Per Well



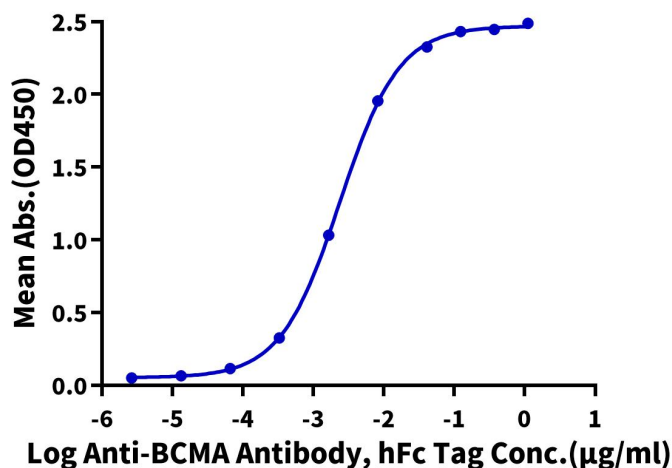
Immobilized Human BCMA, His Tag at 1 µg/ml (100 µl/well) on the plate. Dose response curve for Biotinylated Human BAFF, His Tag with the EC50 of 6.6 ng/ml determined by ELISA (QC Test).

Log Biotinylated Human BAFF, His Tag Conc.(µg/ml)

ELISA Data

Human BCMA, His Tag ELISA

0.05µg Human BCMA, His Tag Per Well



Immobilized Human BCMA, His Tag at 0.5 µg/ml (100 µl/Well) on the plate. Dose response curve for Anti-BCMA Antibody, hFc Tag with the EC50 of 2.4 ng/ml determined by ELISA.

Log Anti-BCMA Antibody, hFc Tag Conc.(µg/ml)